



# Caring for the Spirit

## Sussex Partnership NHS Trust

**John Rosser**

**Deputy Director - Working Age Mental Health Services  
West Sussex**

27 June 2006 – Stanhill Court Hotel

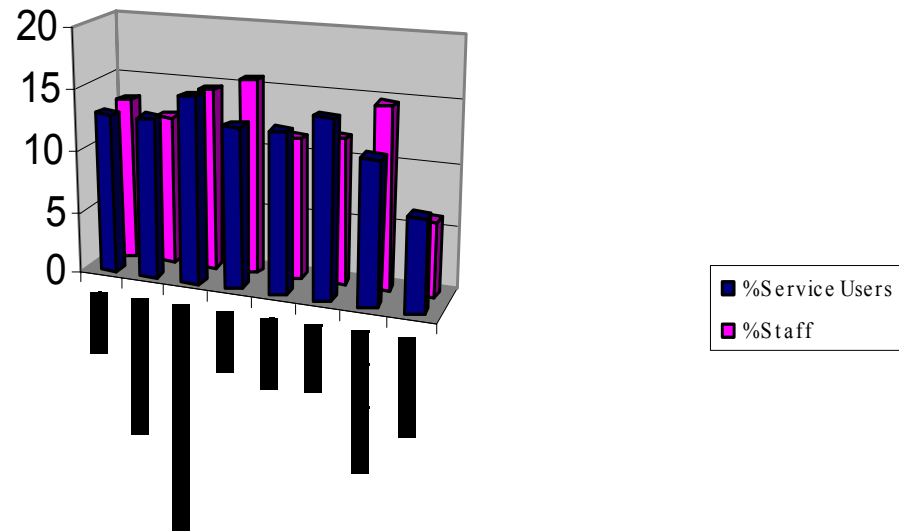
# Caring for the Spirit



- Survey – Service Users and Staff
- Spirituality Steering Group
- Spirituality & Religious Care Strategy
- Action Plan
- Implementation

# Spirituality and Religious Care Survey

What spiritual needs are you aware of?



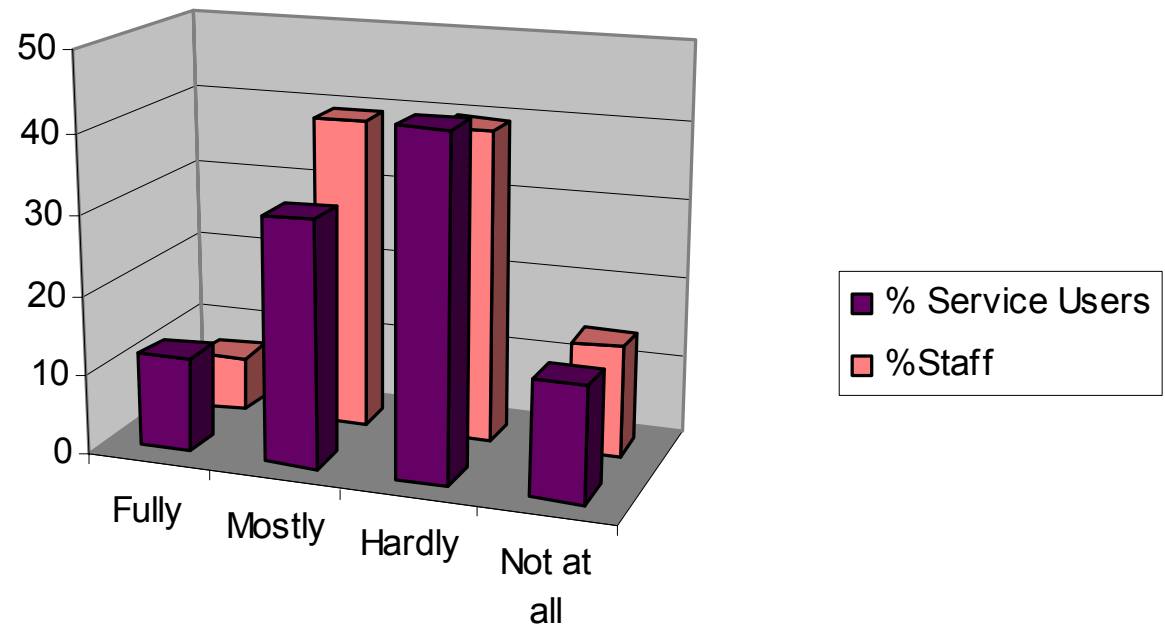
Examples



# Spirituality and Religious Care Survey



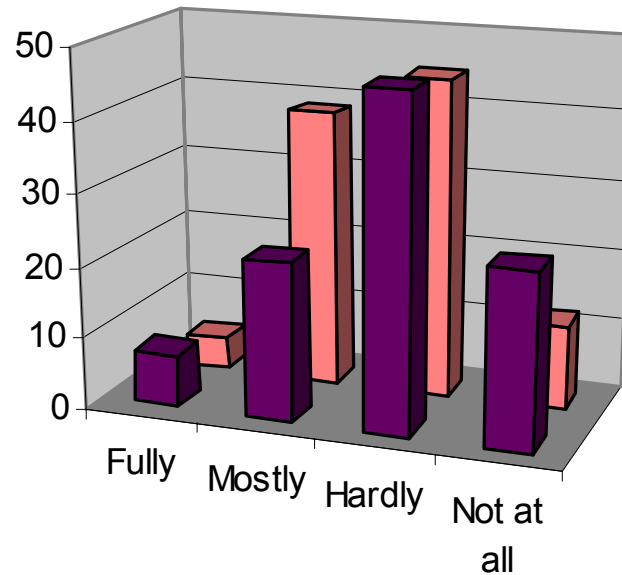
Are your spiritual needs met?



# Spirituality and Religious Care Survey



How well does the mental health services meet your spiritual needs?

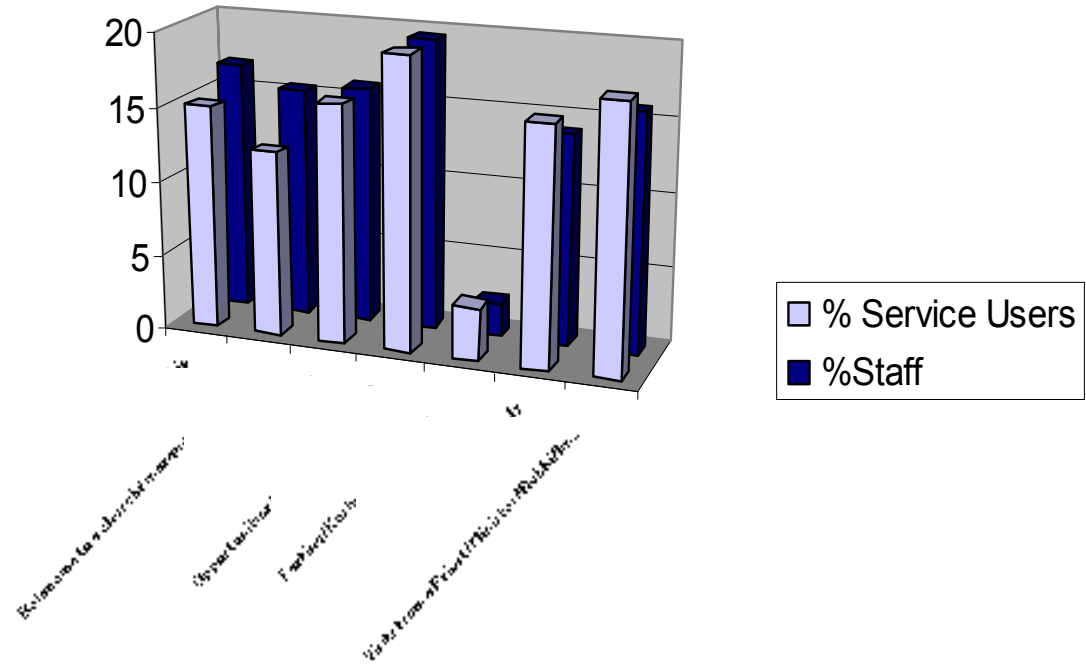


■ % Service Users  
■ % Staff

# Spirituality and Religious Care Survey



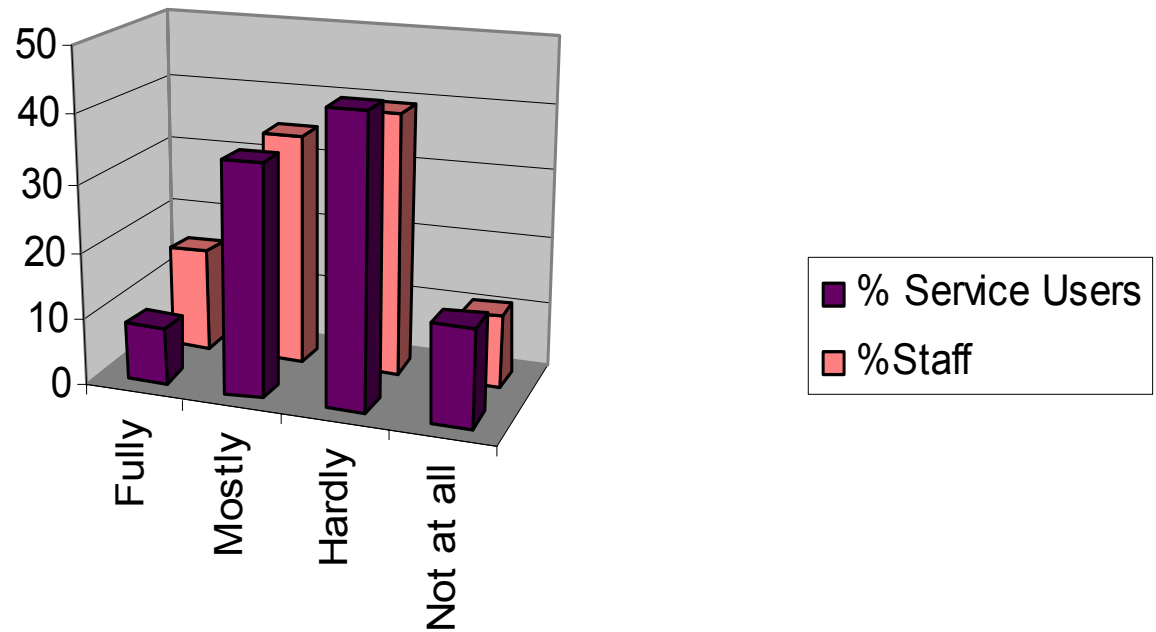
What are your religious needs?



# Spirituality and Religious Care Survey



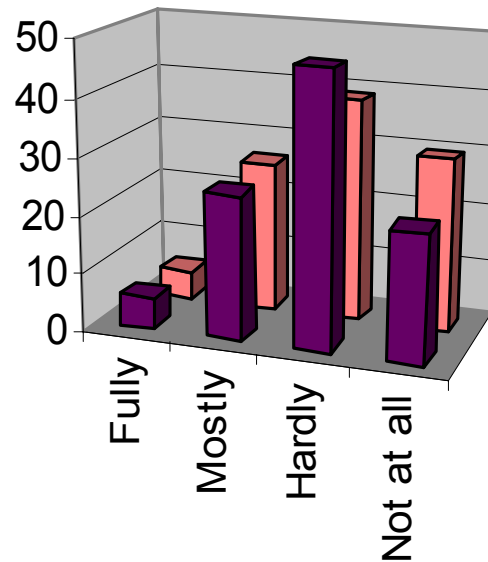
Are your religious needs being met?



# Spirituality and Religious Care Survey



How well does the mental health service help you to meet your religious needs?



■ % Service Users  
■ % Staff



# Spirituality Steering Group

- Executive Sponsorship
- Multi Agency and Disciplinary Commitment
- Project Plan
- Opportunity
- Core Practice
- Expert Contribution – Content, Organisation

# Spirituality and Religious Care Strategy



- Why do we need a Strategy?
- Work to Date
- Values and Ethos
- Our Priorities
- Proposed Action Plan
- Commitment and Conclusion
- Sources of Further Information
- Welcoming Your Comments

# Action Plan



- **Social (Interpersonal) Environment**

- Staff competence, use and access spiritual care, access to chaplaincy, protection of SUs, Care plans include spiritual and religious needs, Information, Liaison with faith leaders, support personhood, open and honest dialogue, protection of SUs, sensitivity, empowerment...

- **Natural (Physical) Environment**

- Sacred space, facilities, private rooms, space for reflection, access to the natural world, respect for diets and fasting, use of retreats and residential activities, complementary therapies...

- **Sacred (Transpersonal) Environment**

- Welcome spiritual and religious discussion - values, ideas and beliefs, festivals, access to religious leaders, opportunities for worship, working with local parishes/communities, integration within care system....

# Implementation

- Strategy launch
- Executive / Board level commitment
- Steering – Implementation Group
- Mainstream responsibility
- Business planning
- Monitoring
- Celebrating success

