

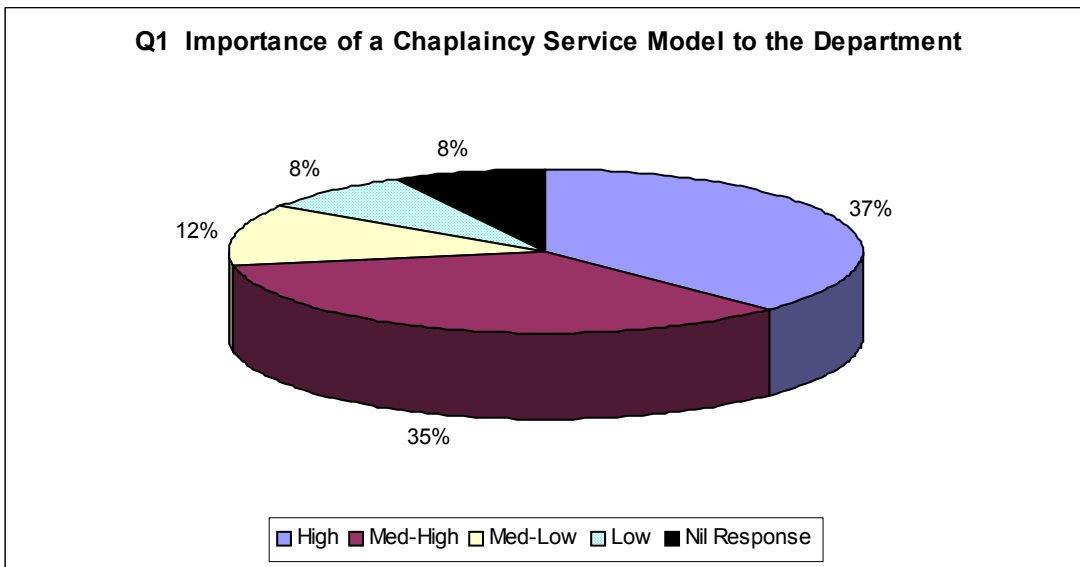
CARING FOR THE SPIRIT

The response rate to the questionnaire from NHS Trusts included in the survey was 87%.

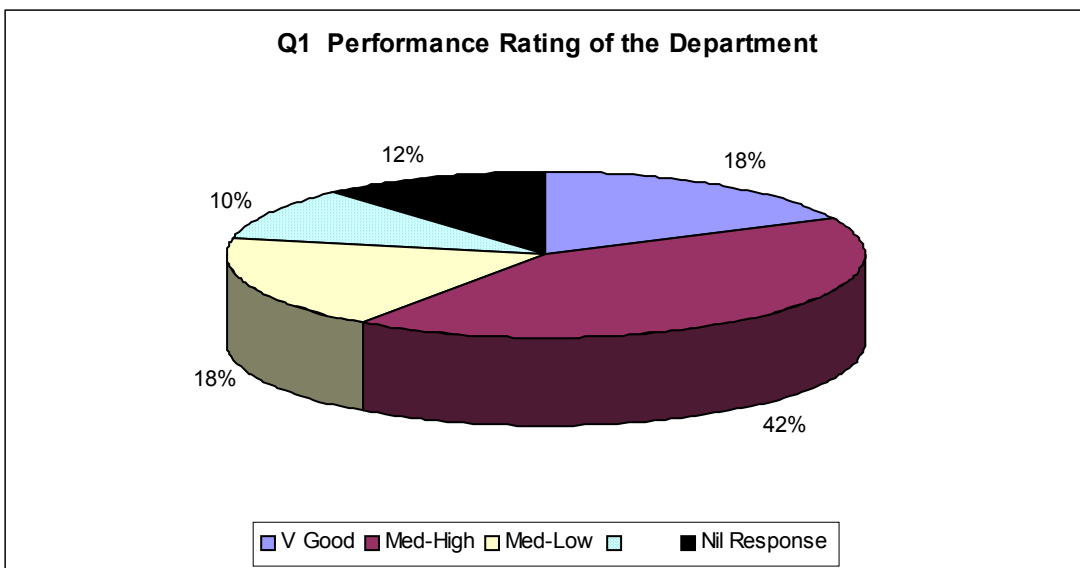
EVIDENCING SPIRITUAL HEALTHCARE

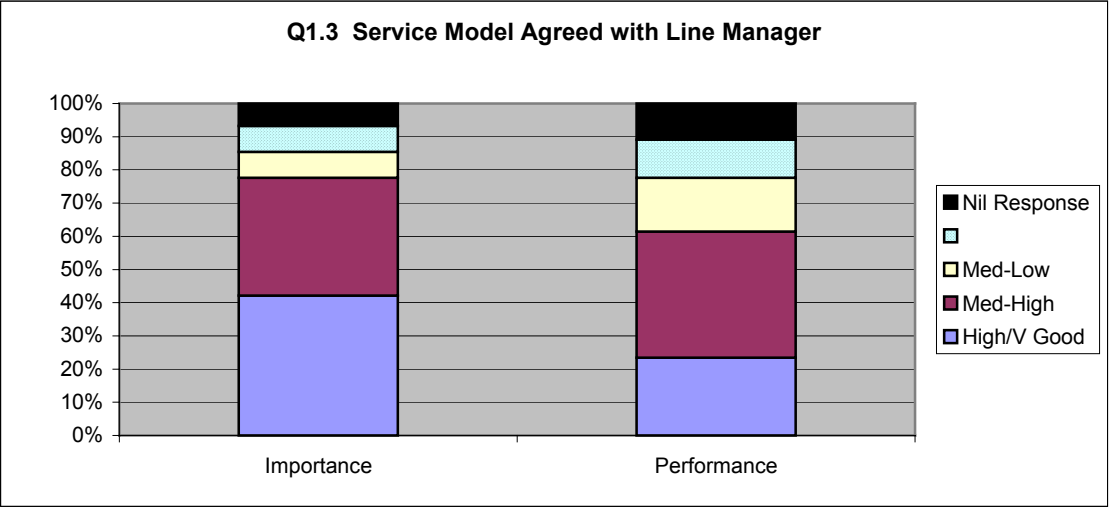
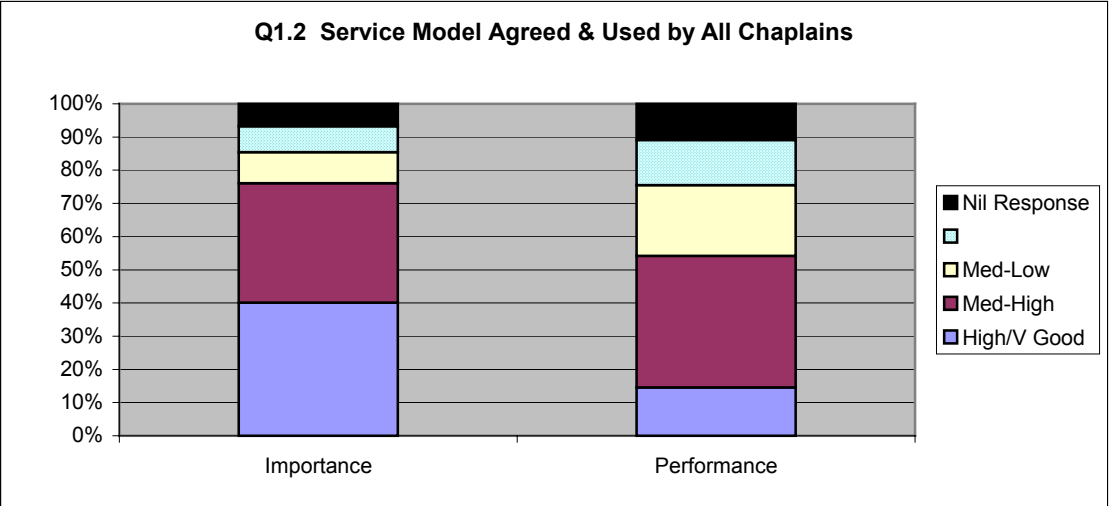
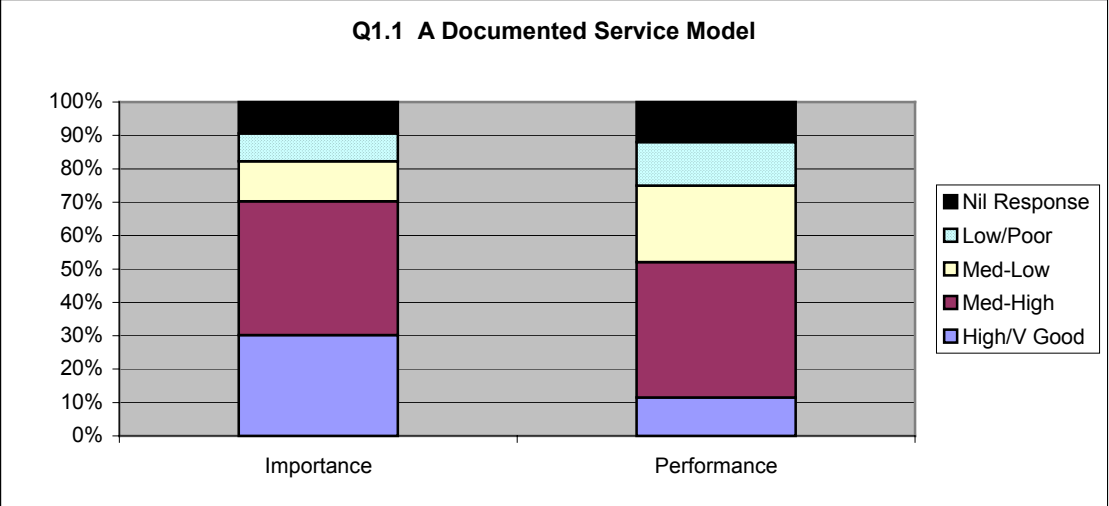
1. Chaplaincy Service Model

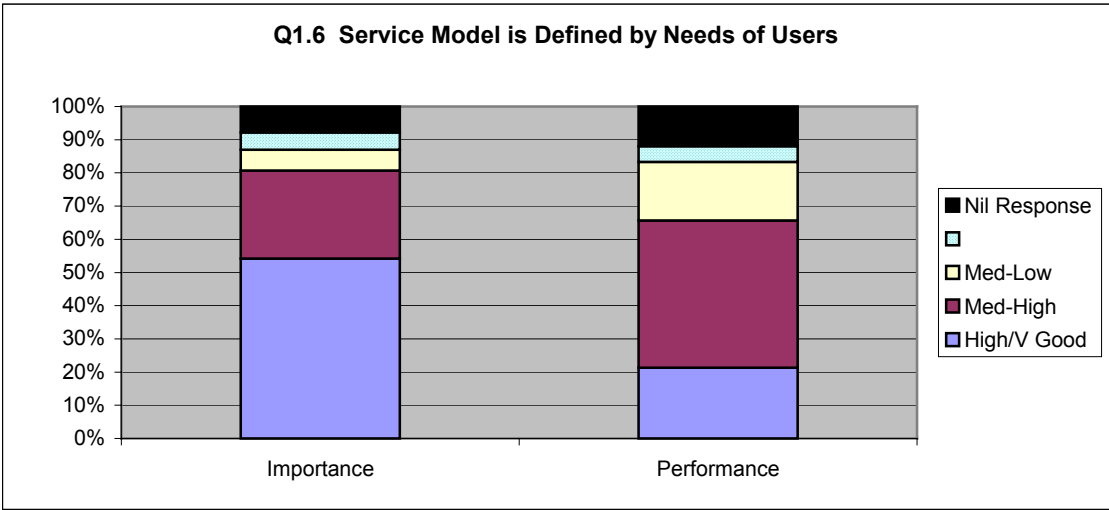
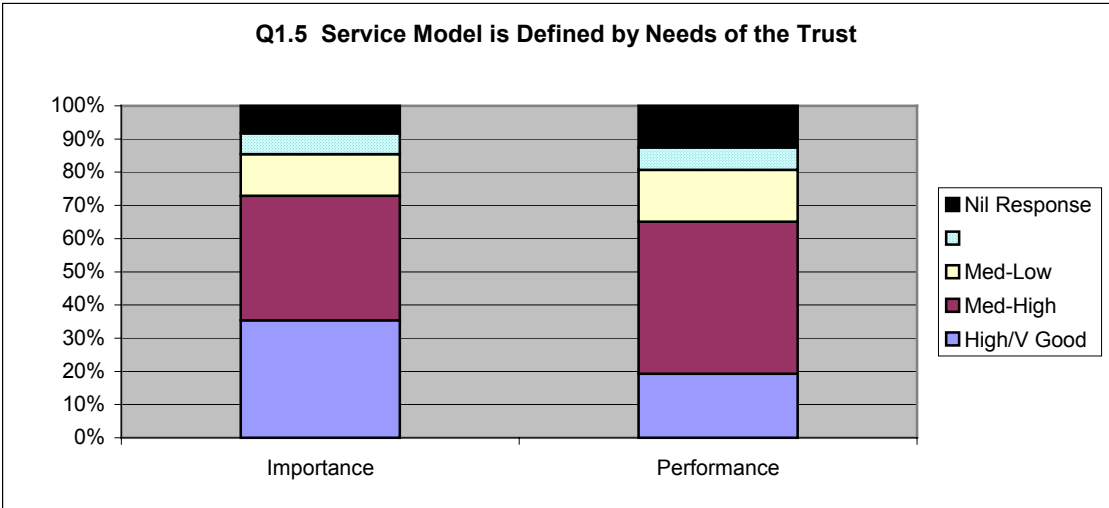
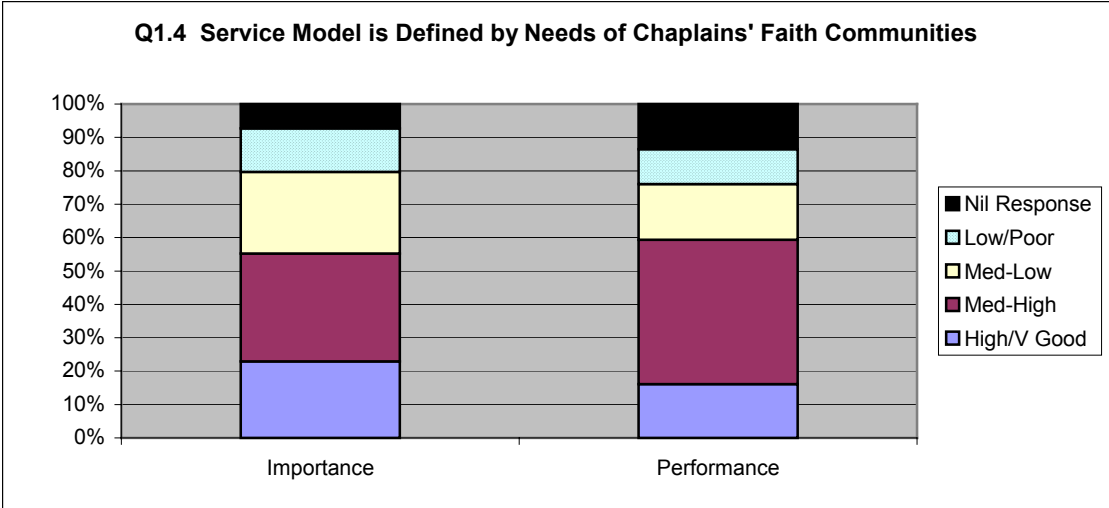
The importance of a chaplaincy service model was rated highly amongst respondents. In total, 72% of respondents scored the importance of a chaplaincy service model in the top two categories.



Performance ratings in the very good and medium-high categories totalled 60%.

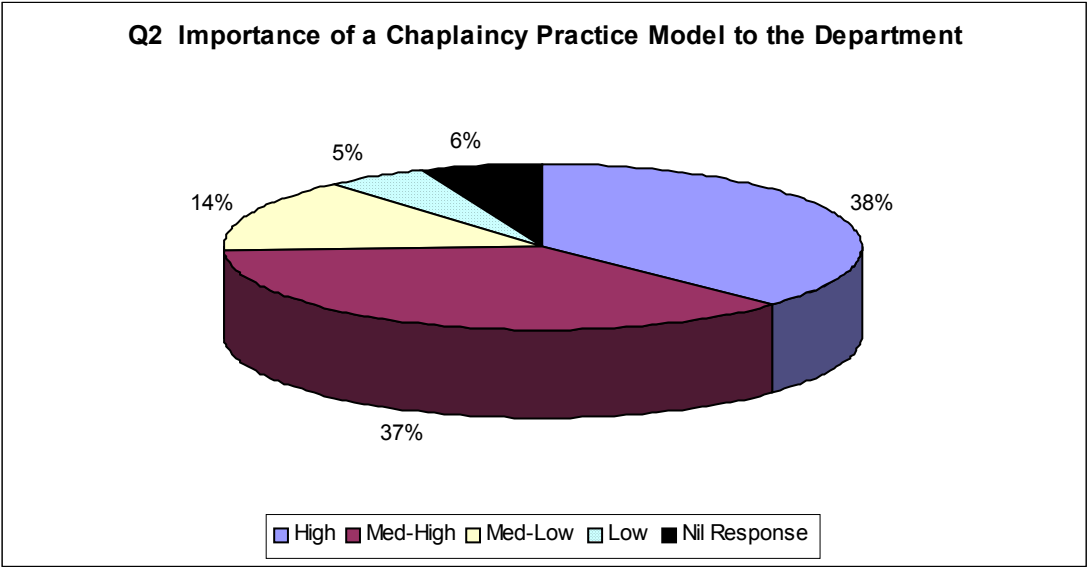




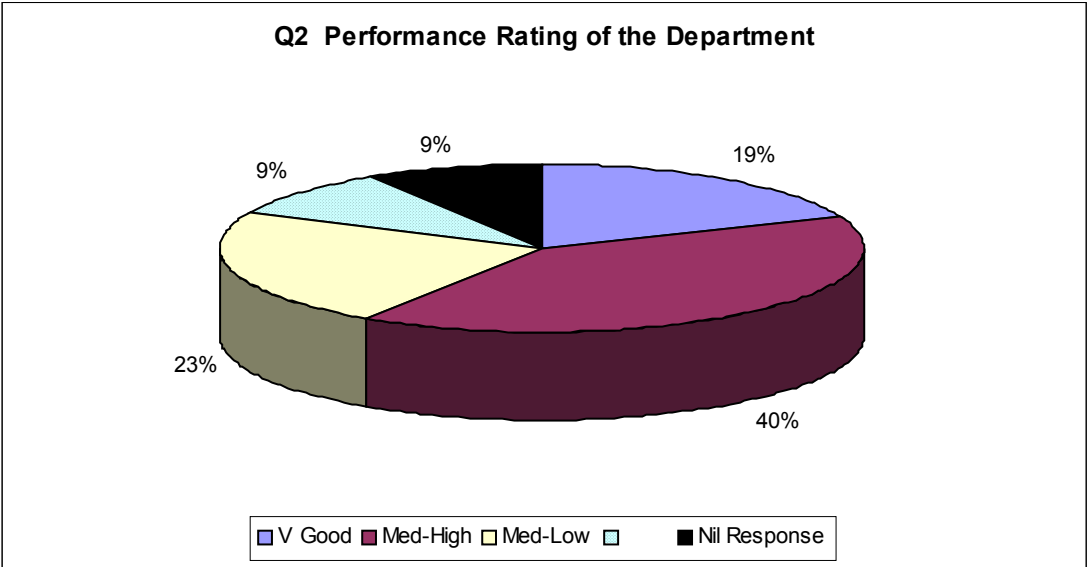


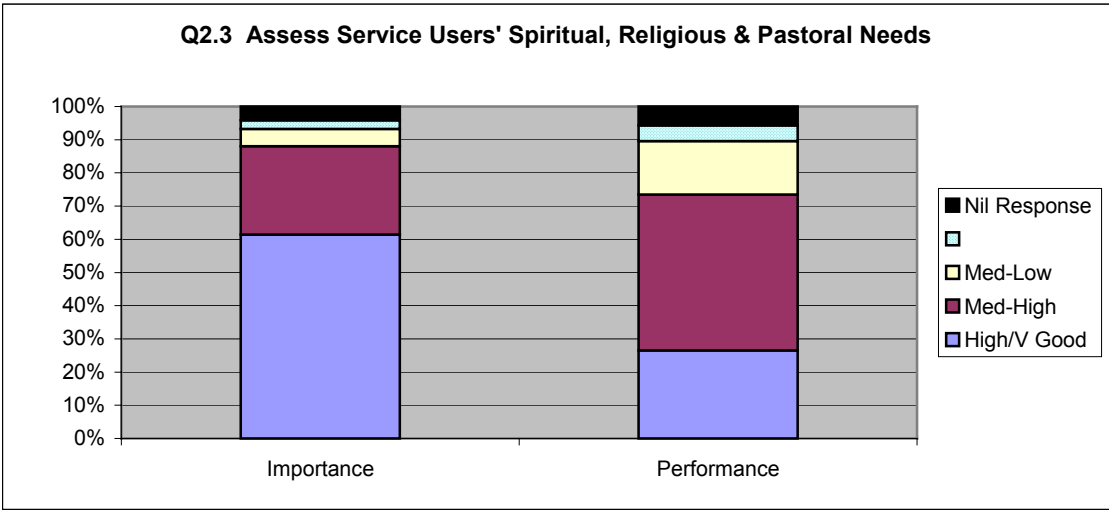
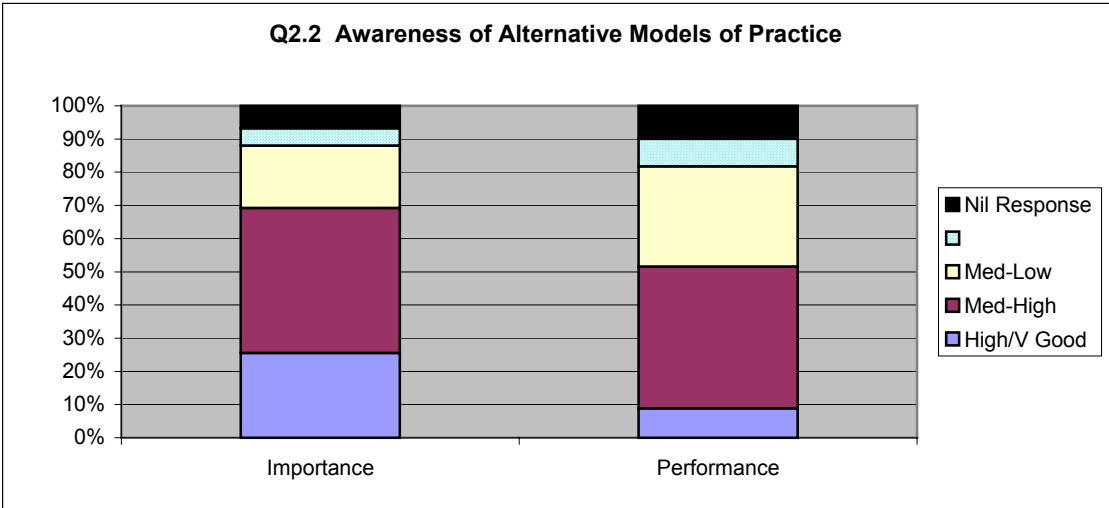
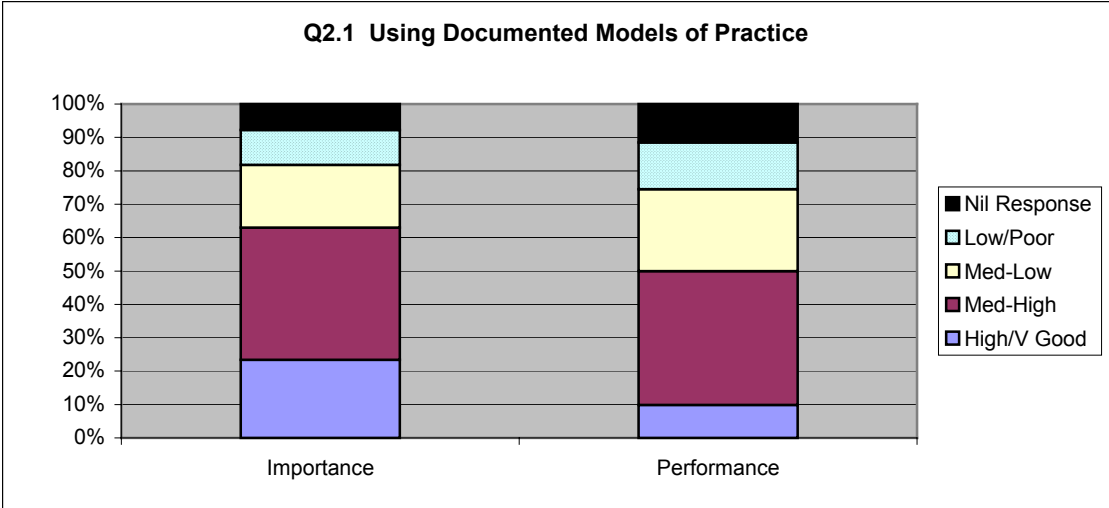
2. Chaplaincy Practice Model

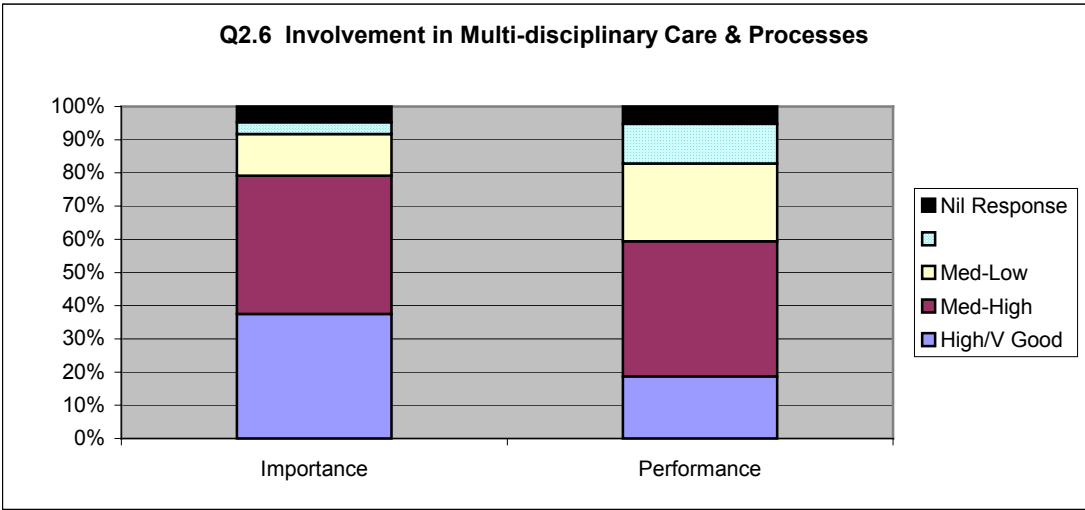
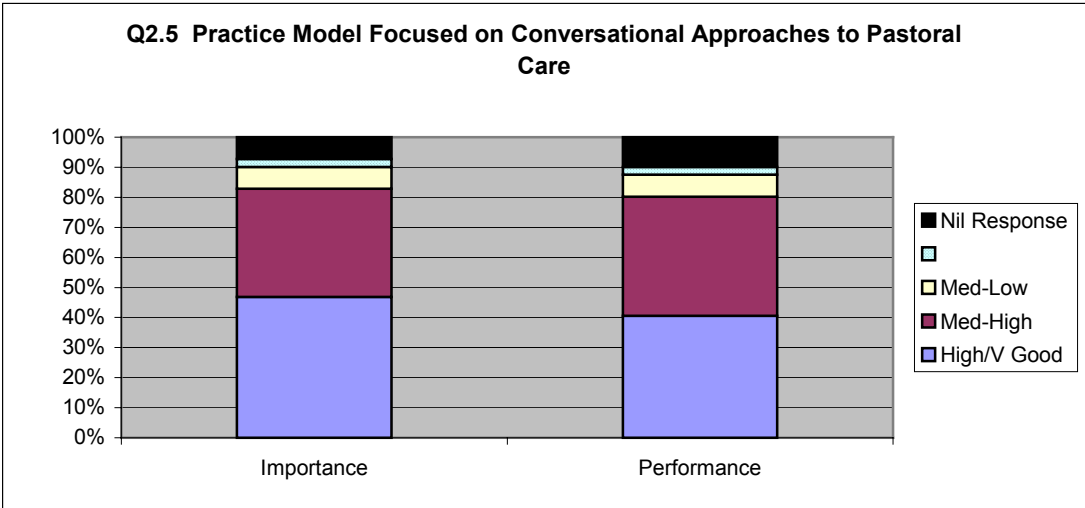
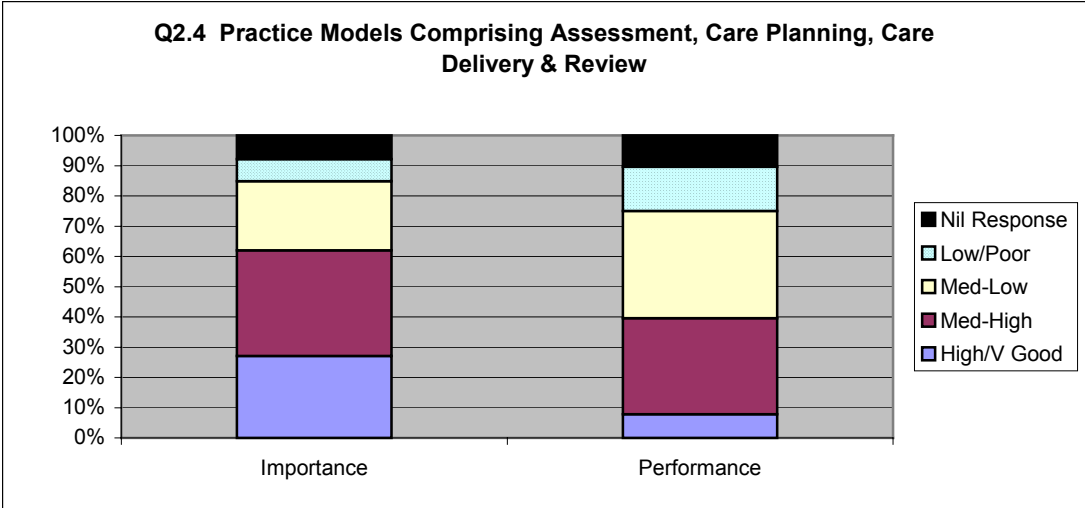
The importance of a chaplaincy practice model to the department was seen as a high priority. In total, 75% of responses were in the high and medium-high categories.



The performance rating in the very good and medium-high categories totalled 59%. However, at 23%, almost a quarter of respondents considered performance to be in the medium-low category.

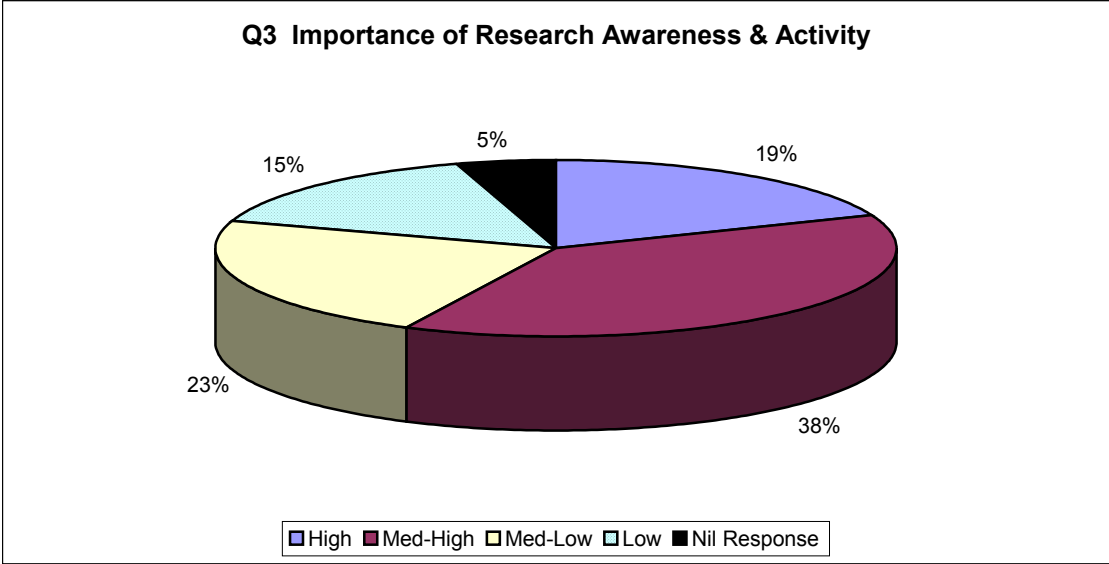




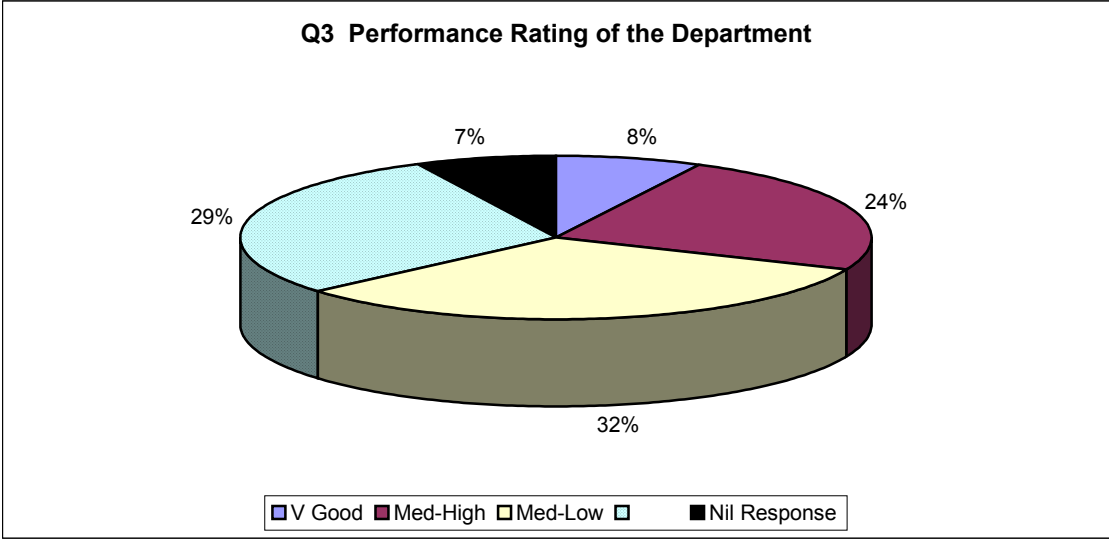


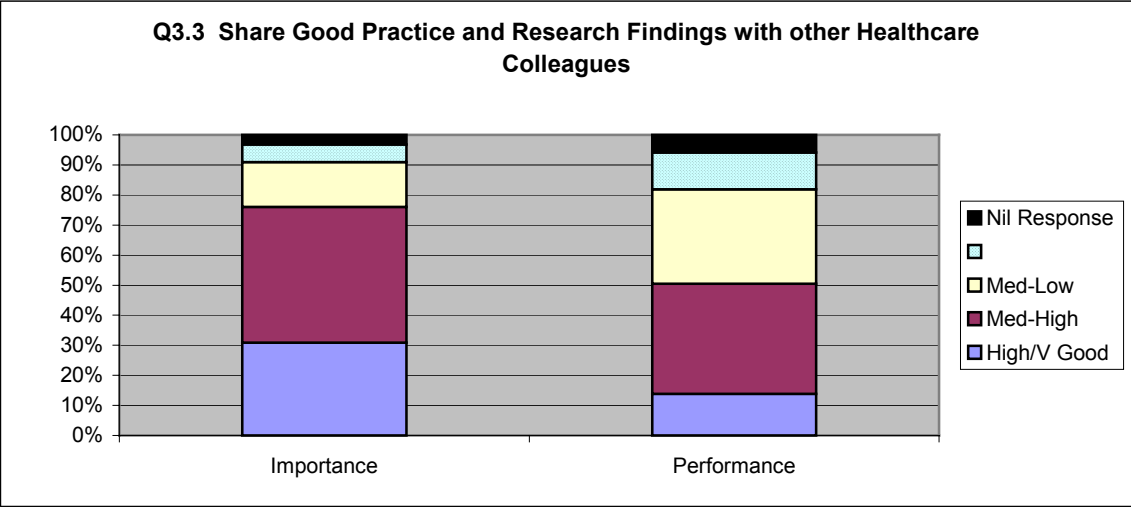
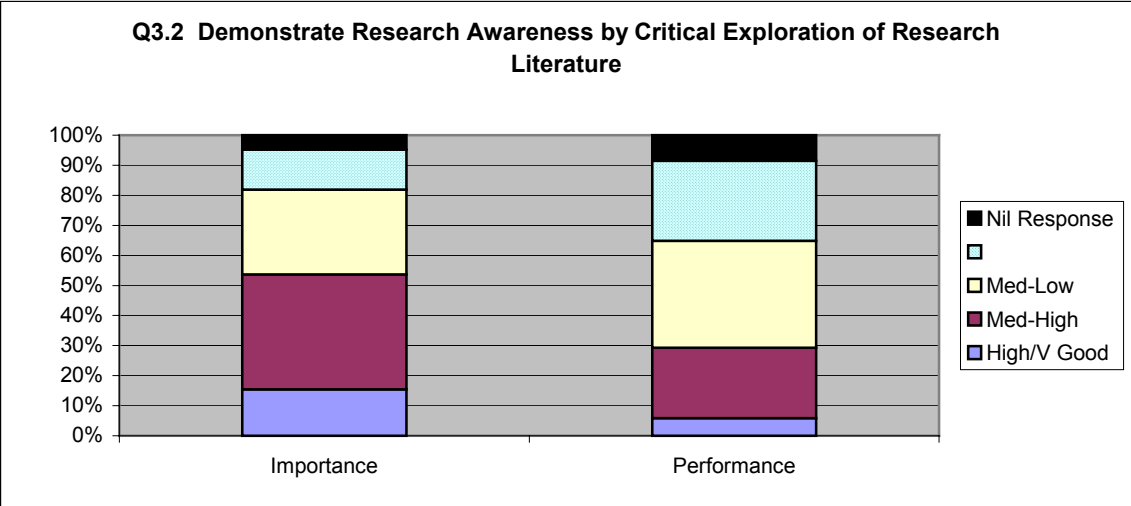
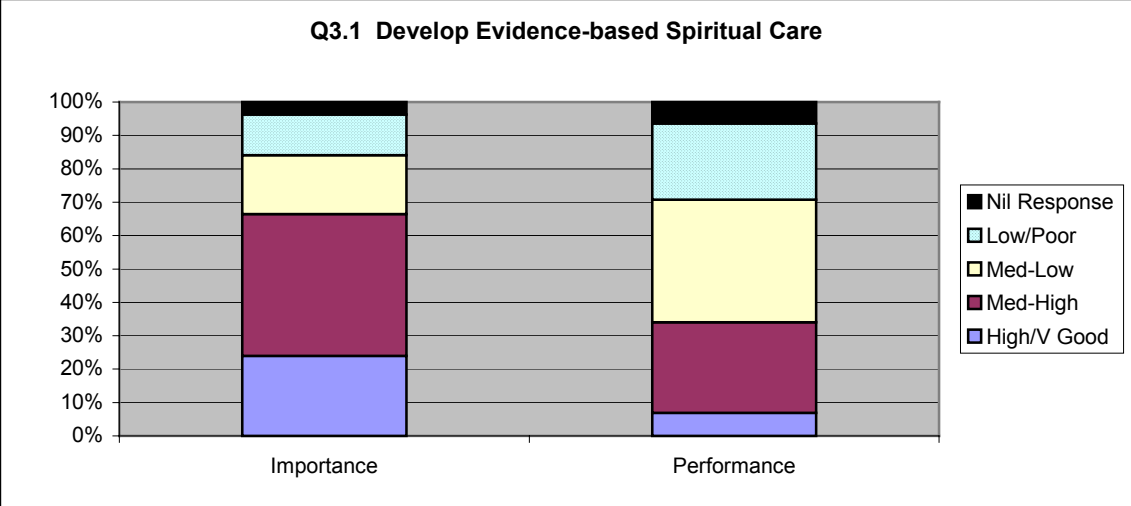
3. Research Awareness & Activity

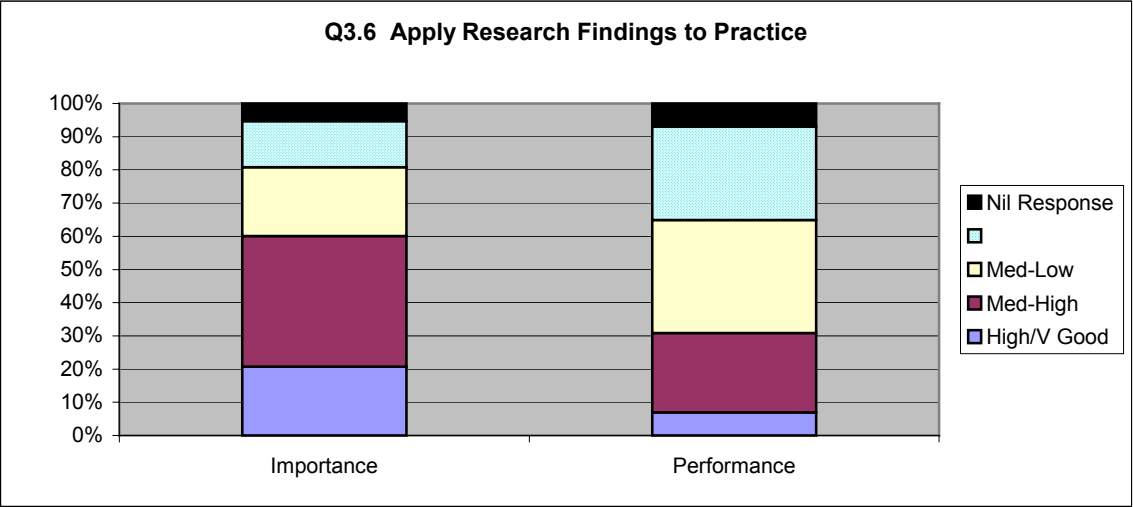
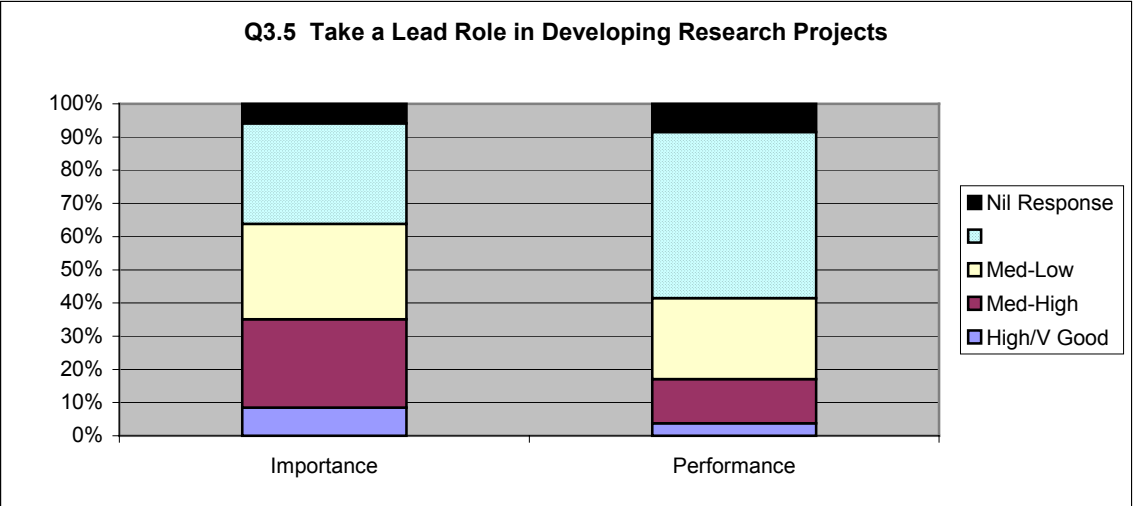
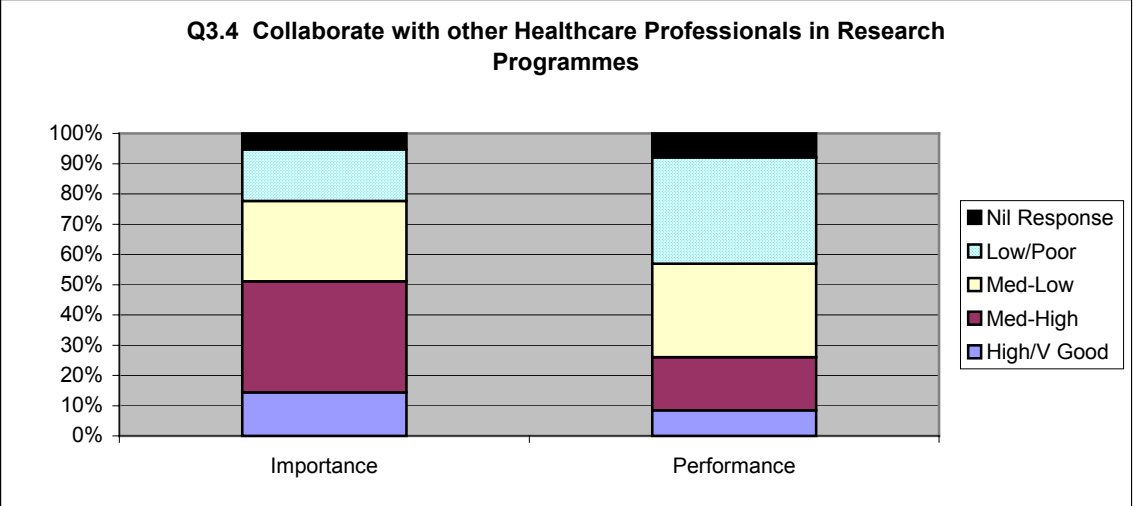
The importance of research awareness and activity was fairly evenly split amongst the categories. However, 57% of respondents graded importance of research awareness and activity in the top two categories.



Only 32% of responses rated performance in the very good and medium-high categories. 61% of respondents rated performance in the bottom two categories.

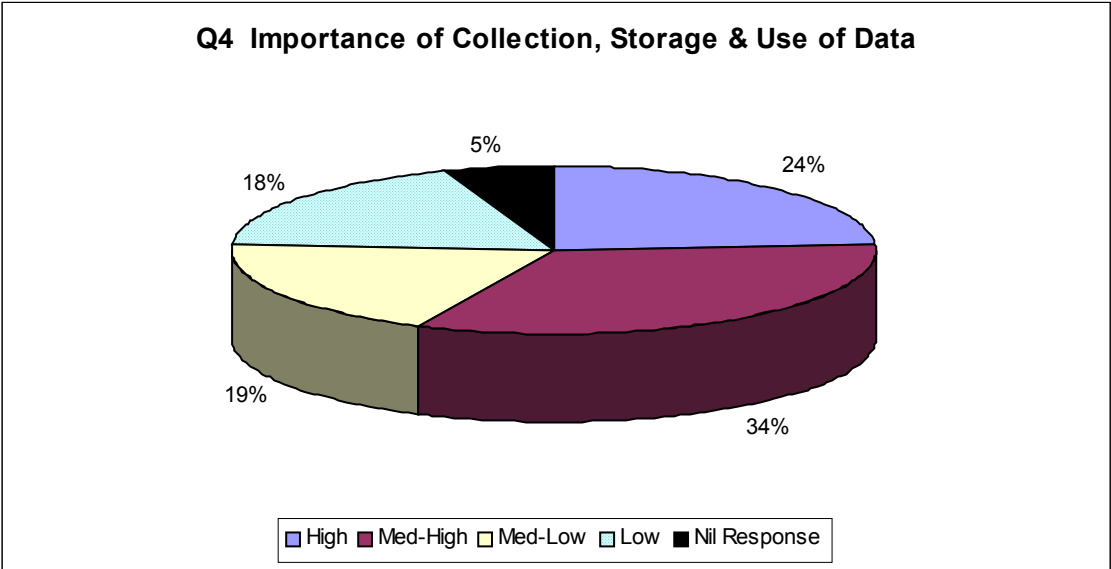




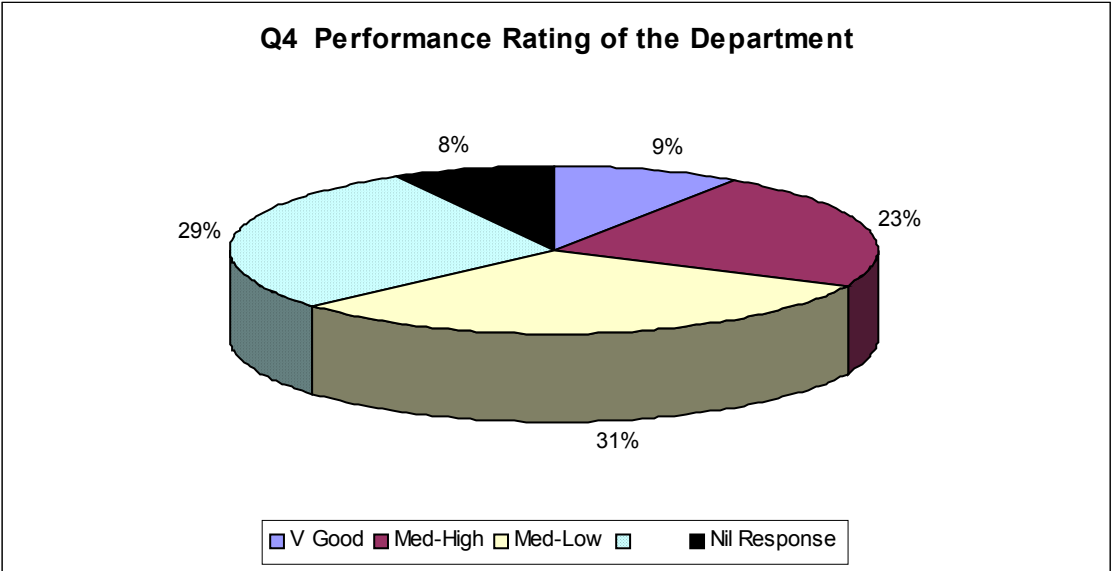


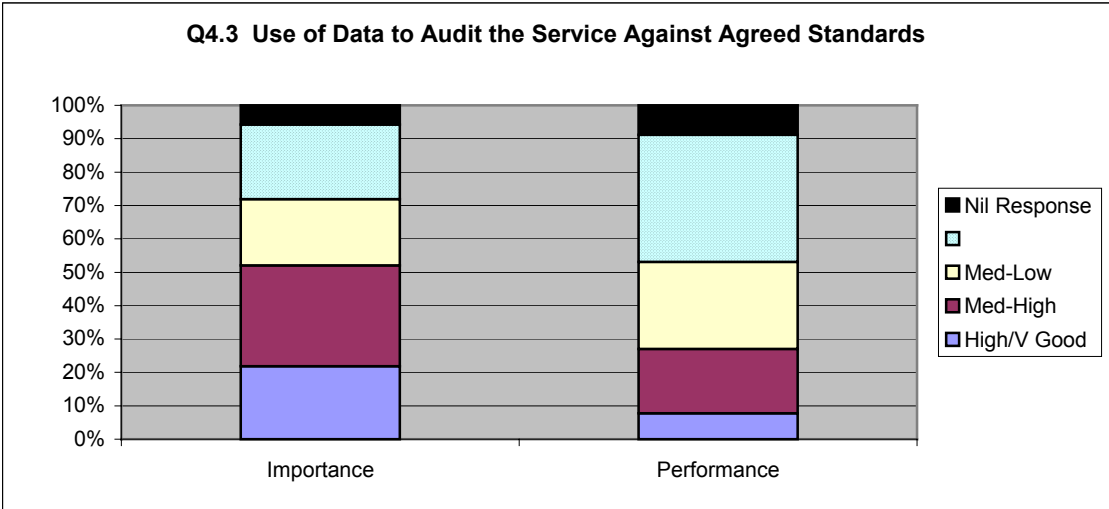
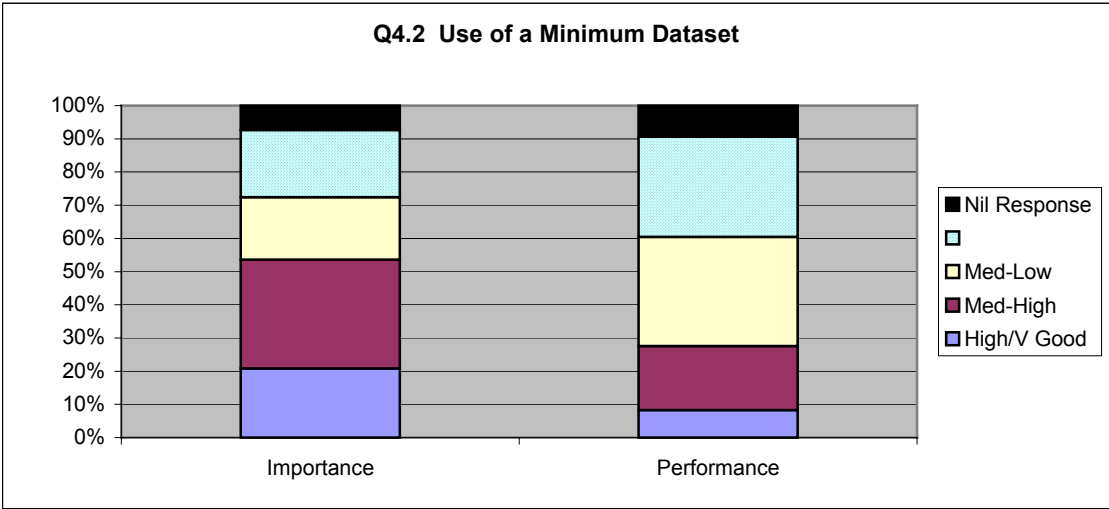
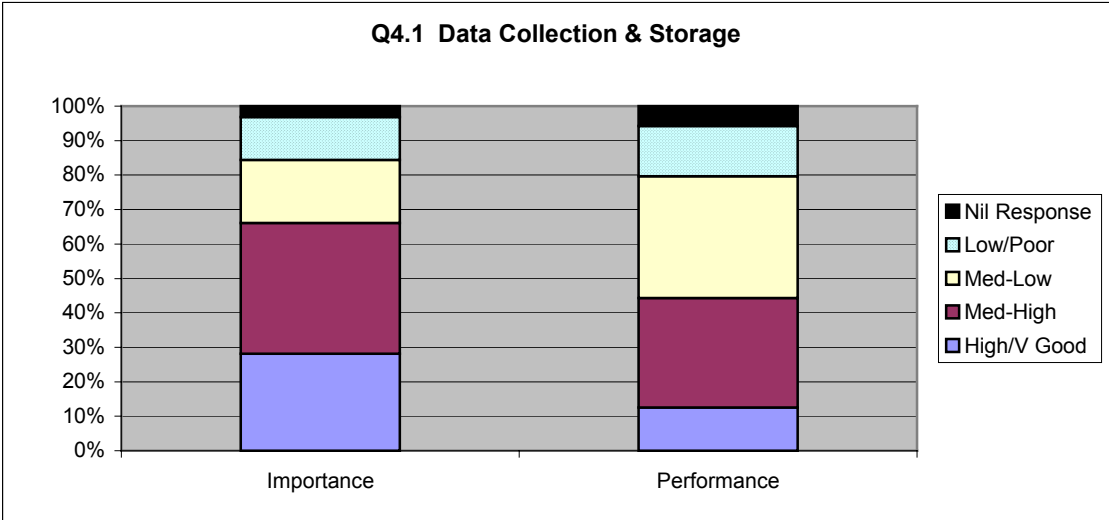
4. Data Collection, Storage and Use

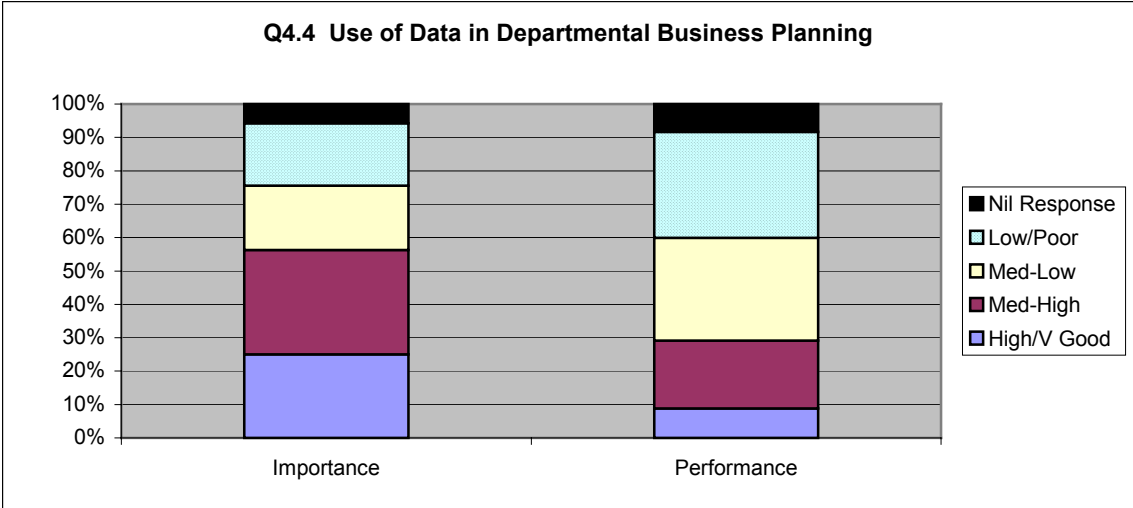
The top two categories totalled 58% for the importance of collection, storage and use of data.



The performance of departments in the collection, storage and use of data was not rated very highly amongst responses received. The majority of respondents (60%) rated performance in the bottom two categories, with only 32% of responses rating performance in the top two categories.



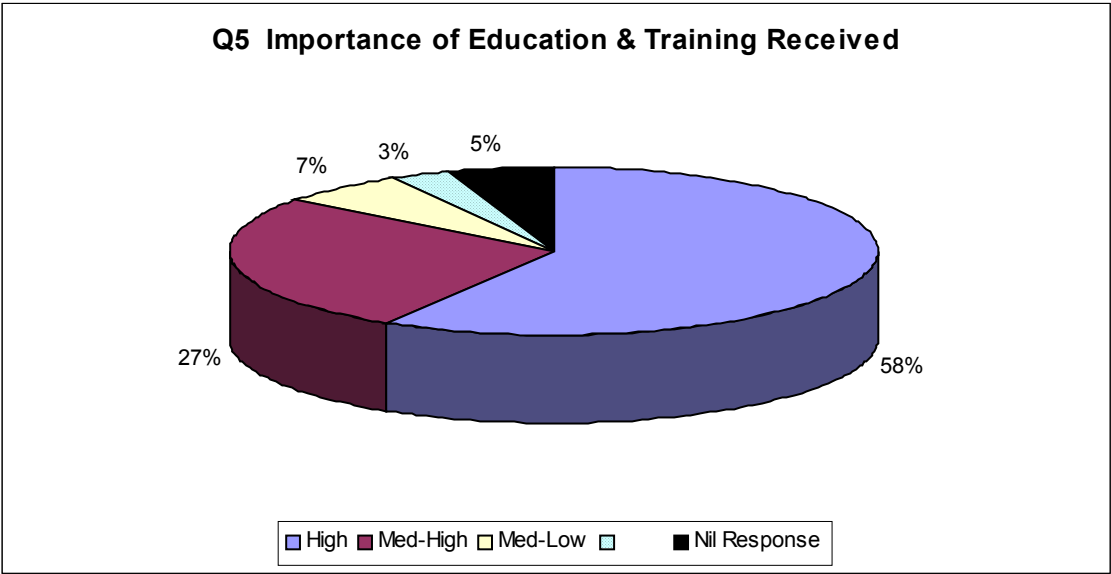




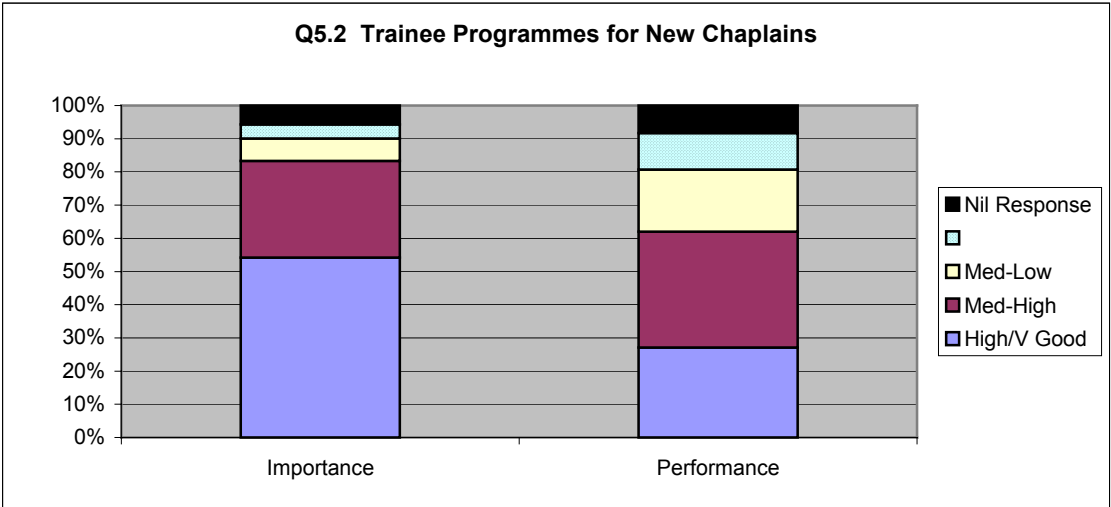
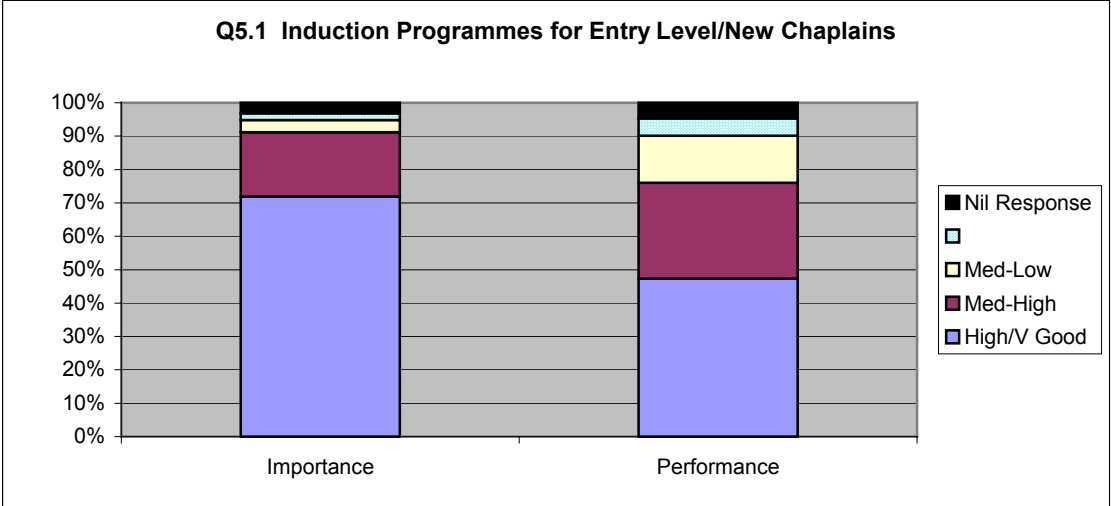
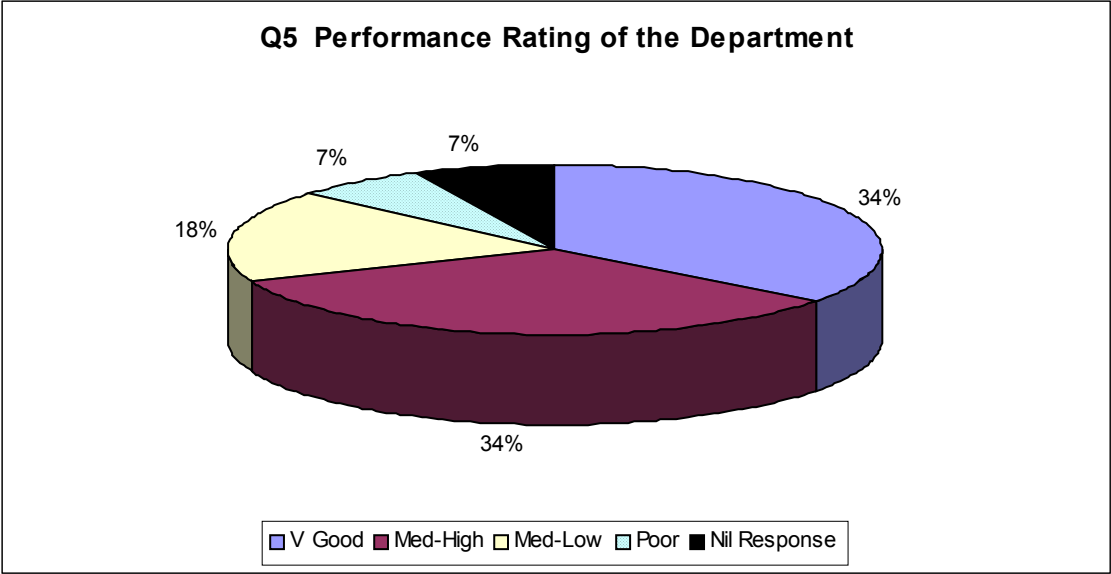
EDUCATION AND TRAINING

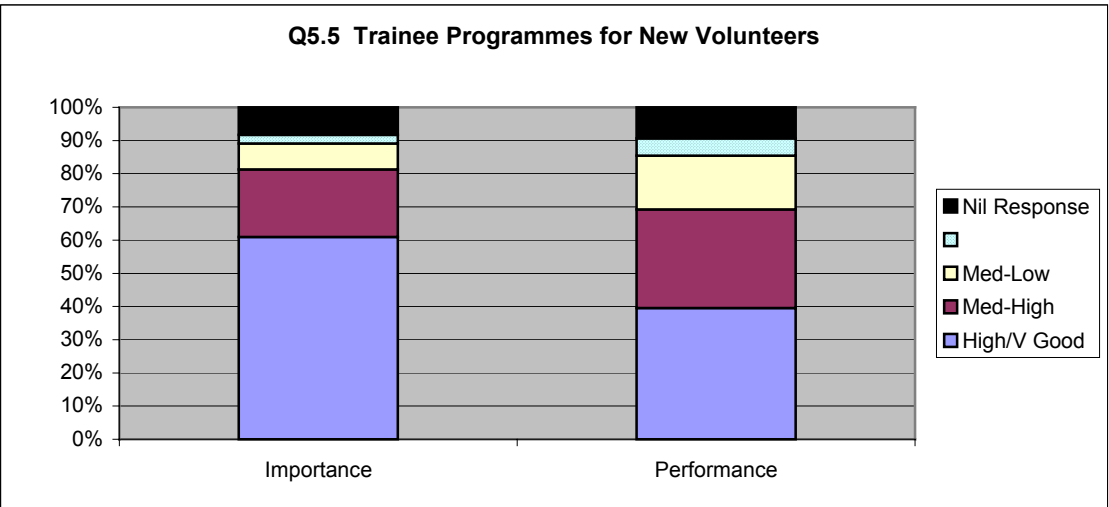
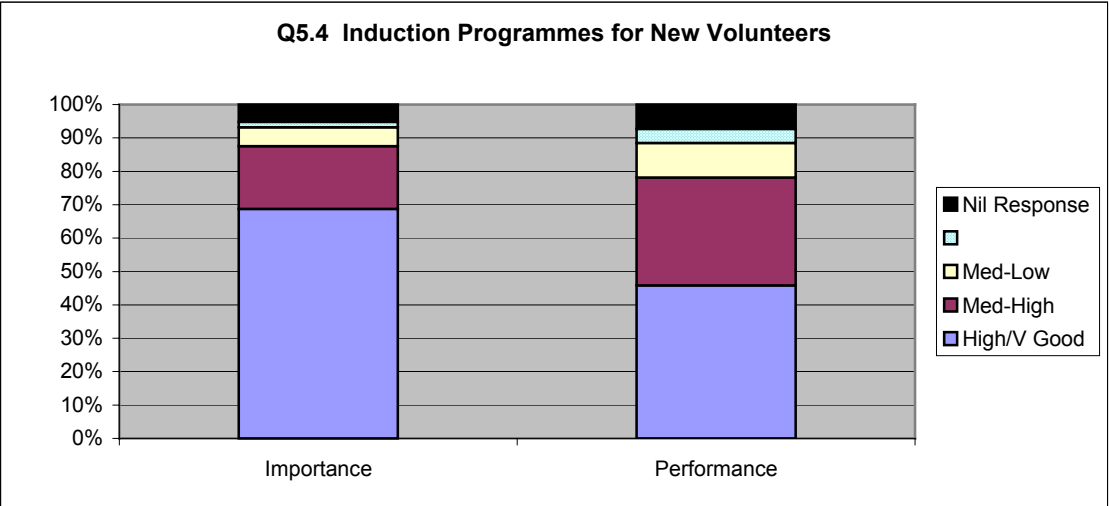
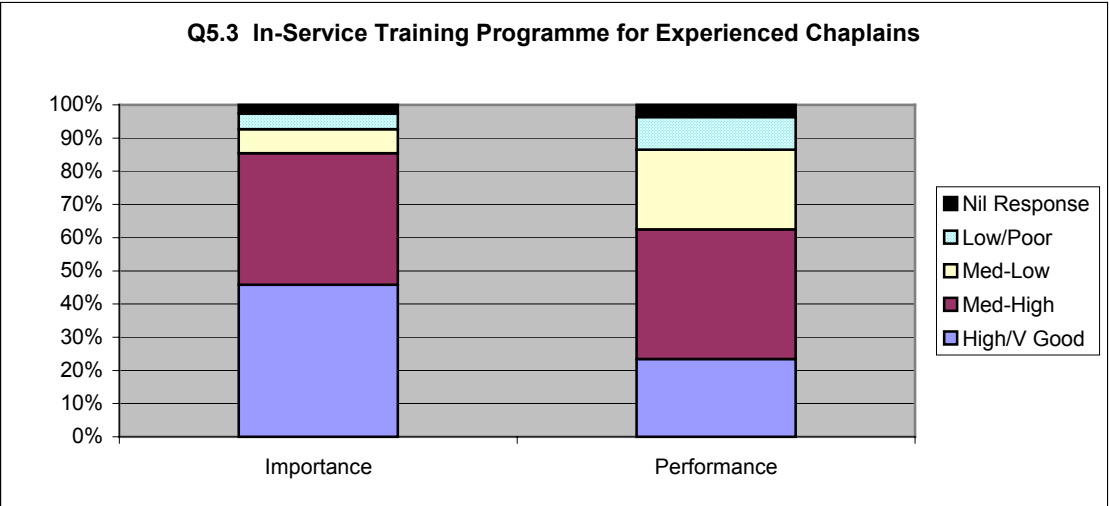
5. Education & Training Received

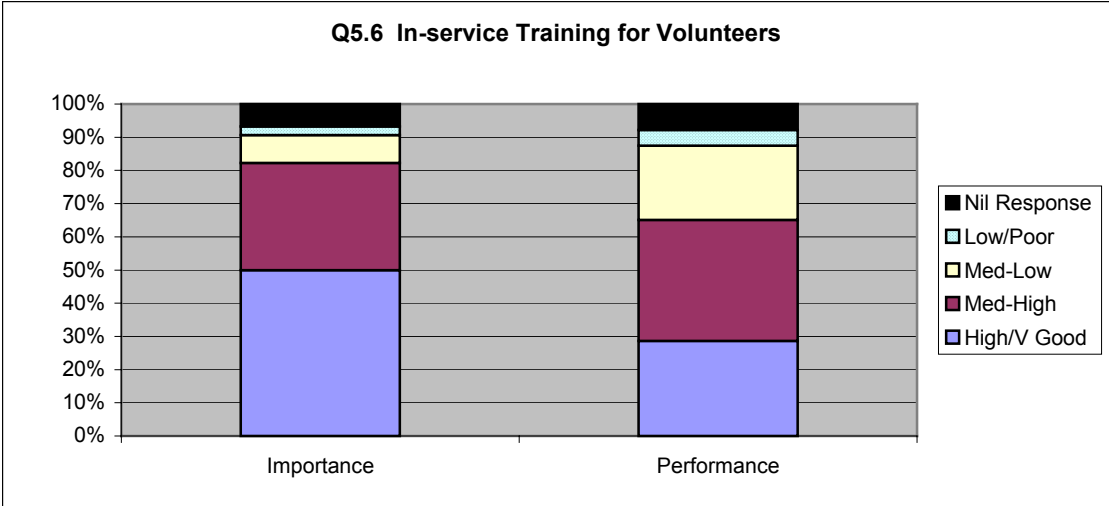
The importance of education and training received was rated very highly amongst those that completed the questionnaire. A total of 85% rated the importance within the high and medium-high categories.



Performance was rated highly with 68% ranking performance in the top two categories.

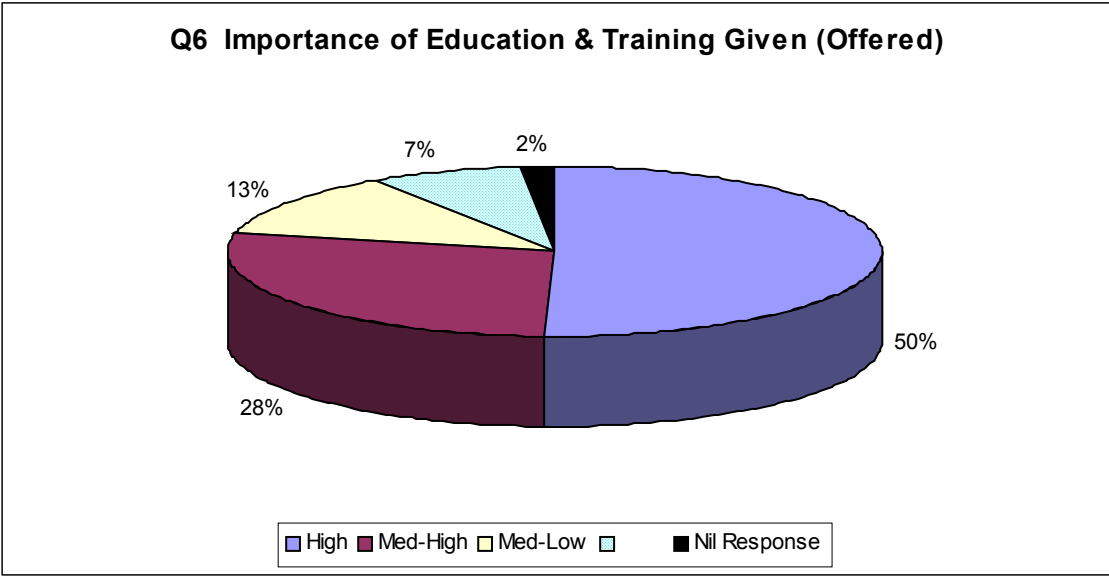




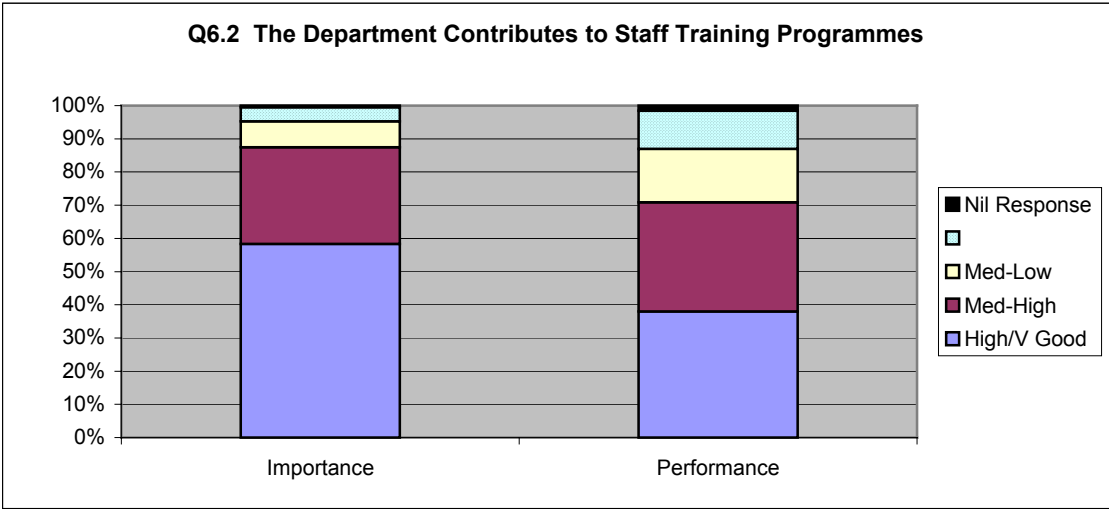
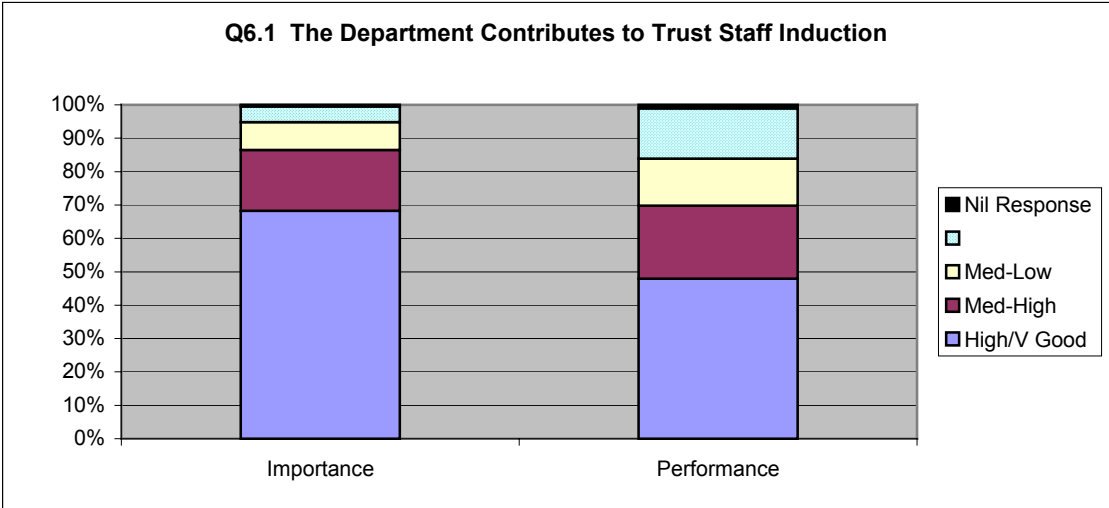
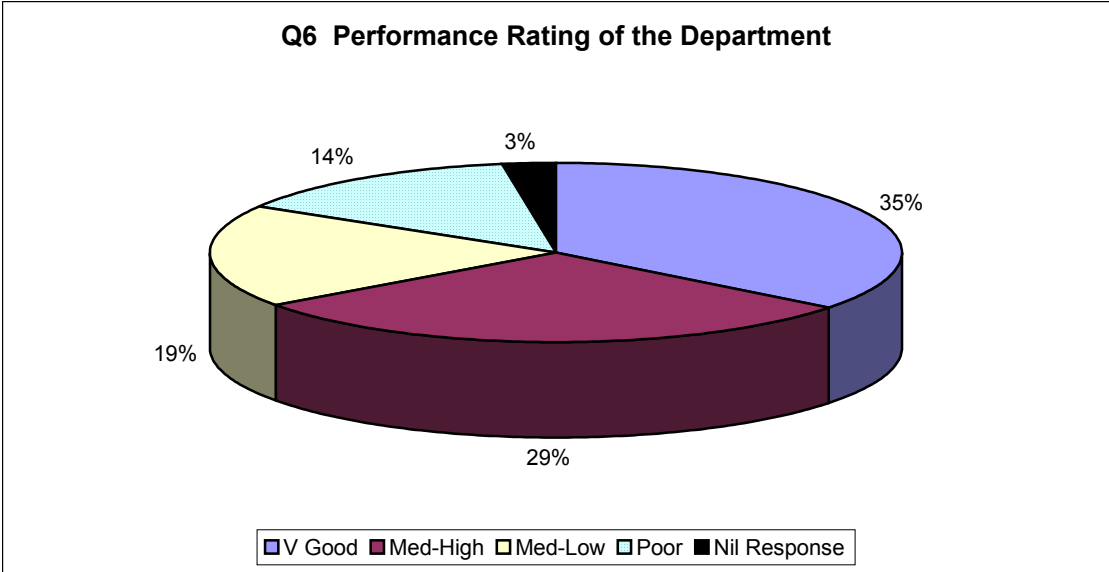


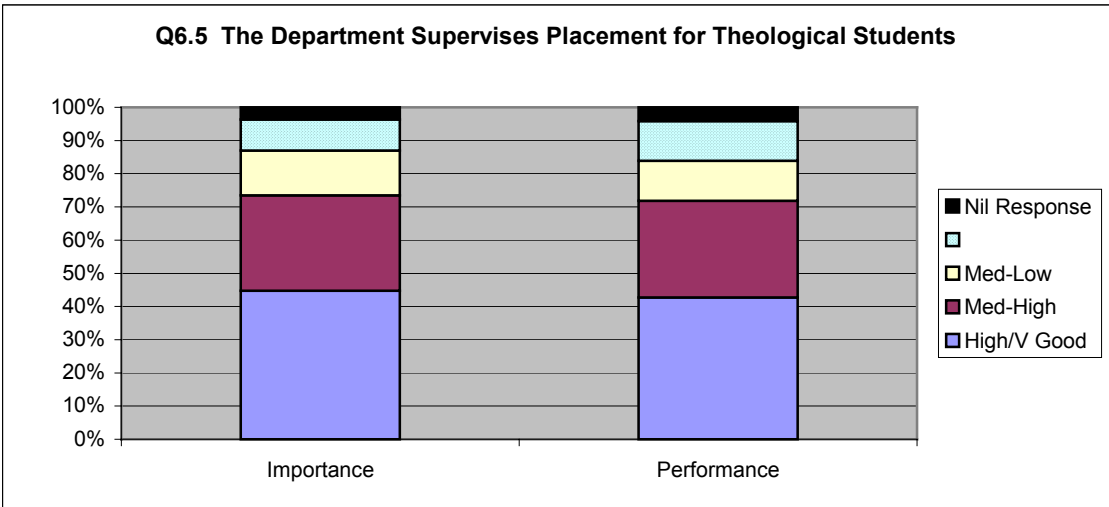
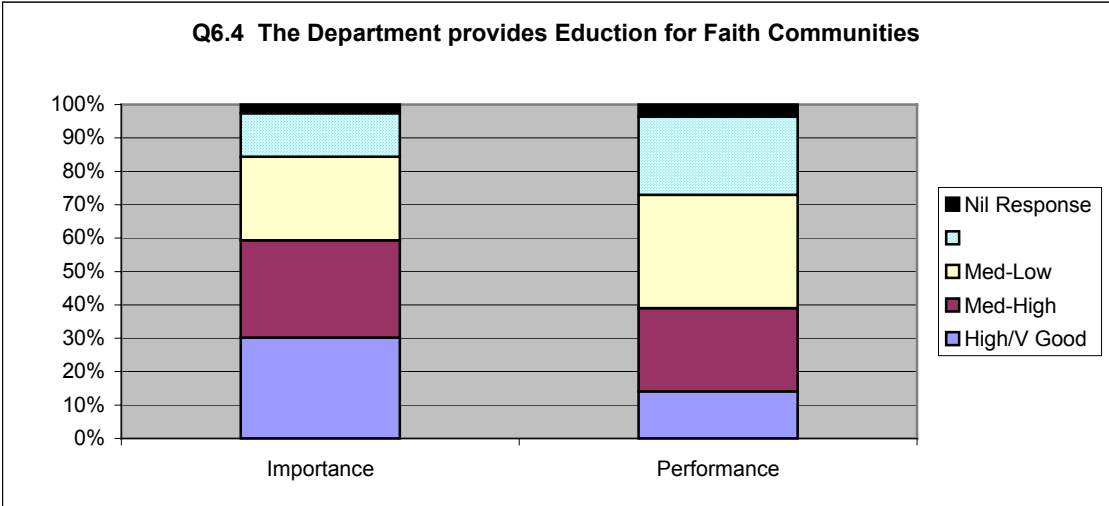
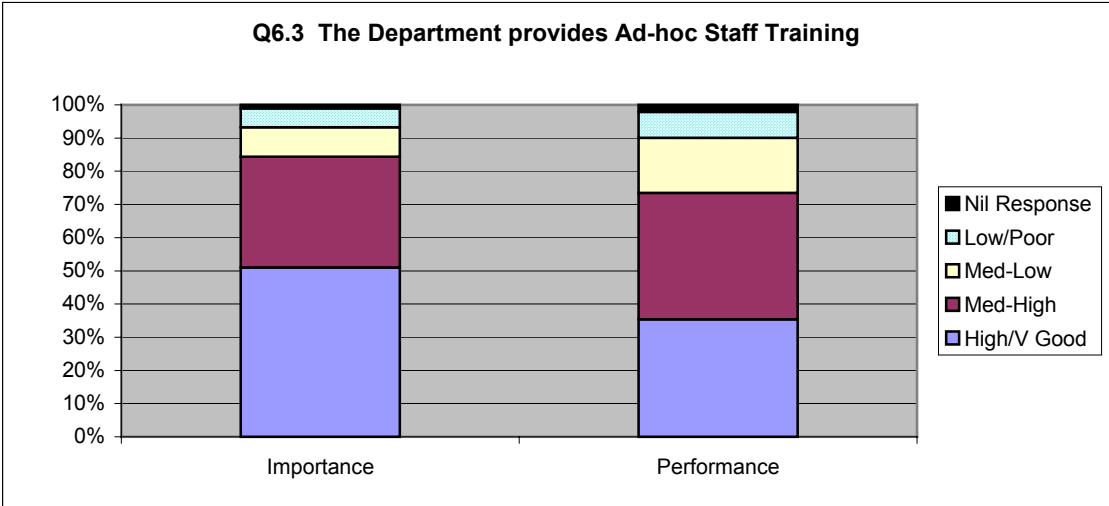
6. Education & Training Given (Offered)

Respondents rated education and training given highly important. 78% scored the importance within the top two categories.



Those responding to the survey rated performance highly, at 64% in total for the high and medium-high categories.

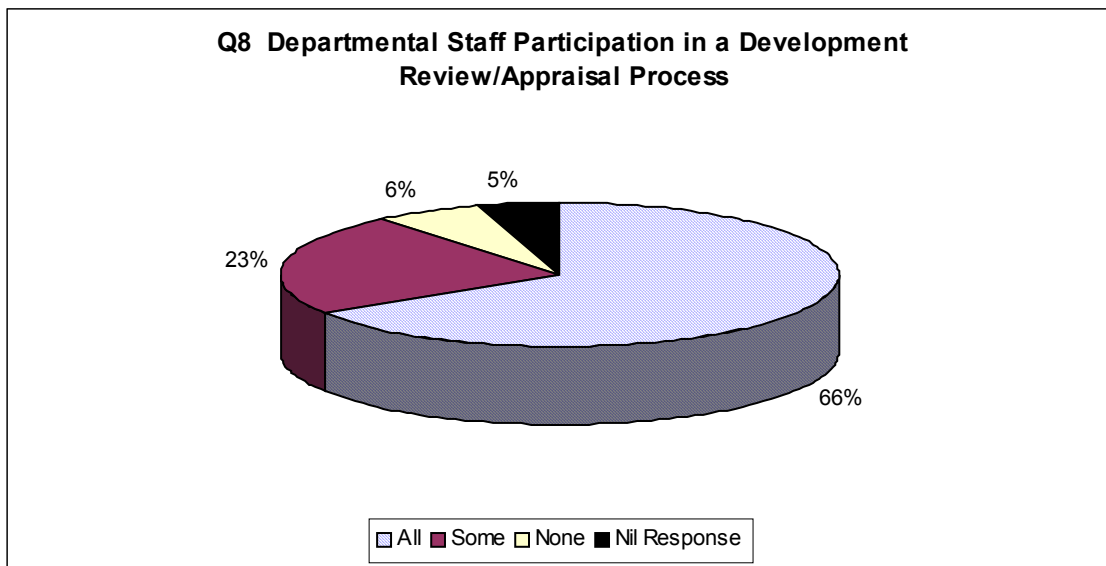




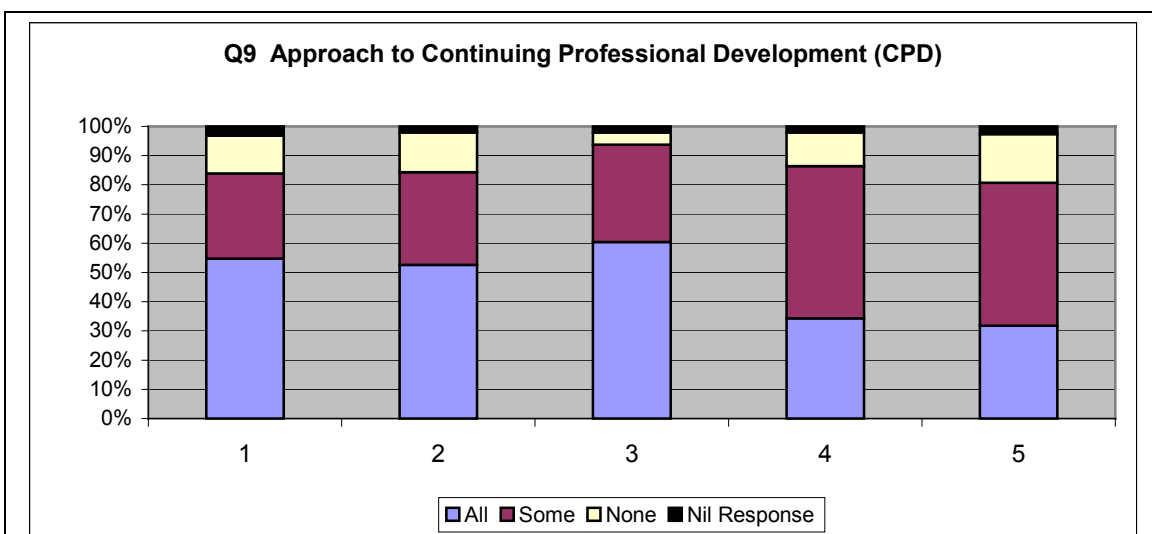
CAREER DEVELOPMENT

The percentage of respondents indicating that the following opportunities existed within their Trust were:-

Q7.1 Specific Trainee Posts	19%
Q7.2 Specific Specialist Chaplain Posts	24%
Q7.3 Specific Advanced Practitioner Posts	8%
Q7.4 Specific Team Leader/Manager Post	85%
Q7.5 Specific Consultant Post	3%



Scores ranged from 32% to 60% within the 'all' category for the approach to CPD.



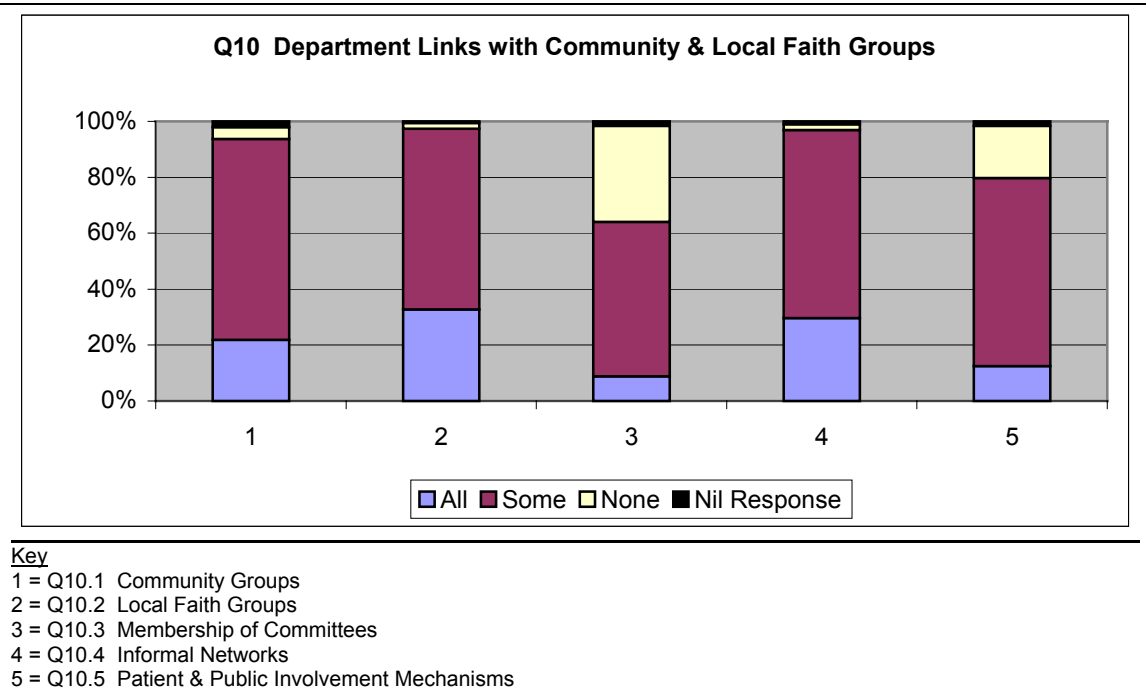
Key

- 1 = Q9.1 CPD is linked to annual development review process.
- 2 = Q9.2 Staff have a personal development plan.
- 3 = Q9.3 Staff have access to a range of development opportunities.

4 = Q9.4 Staff demonstrate evidence of CPD activity that benefits the service users.
 5 = Q9.5 Staff are supported in their learning by a mentor, coach or supervisor.

LOCAL GROUPS & FAITH COMMUNITIES

10. Links with all local groups and faith communities through a variety of ways ranged from 9% up to 33% of respondents.

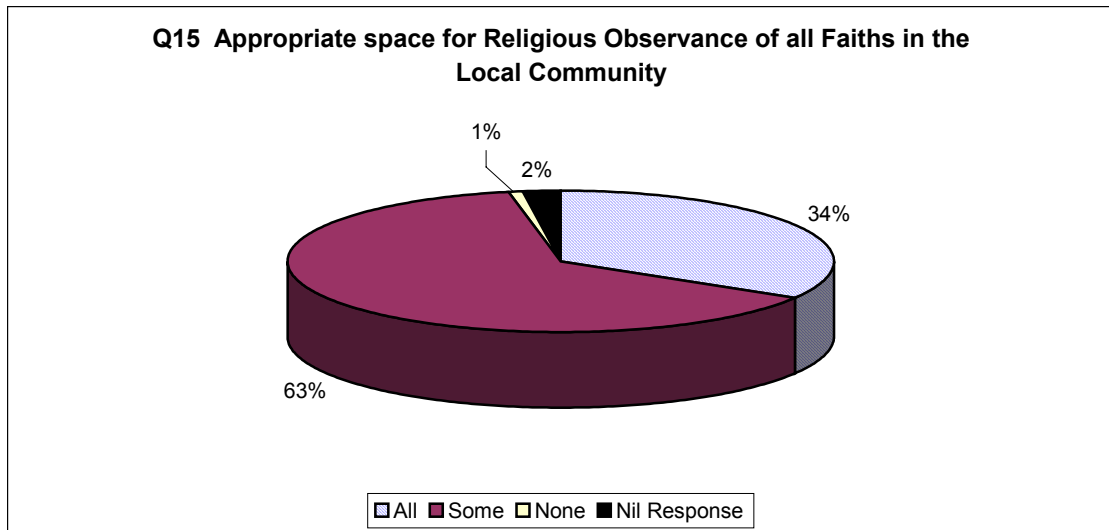
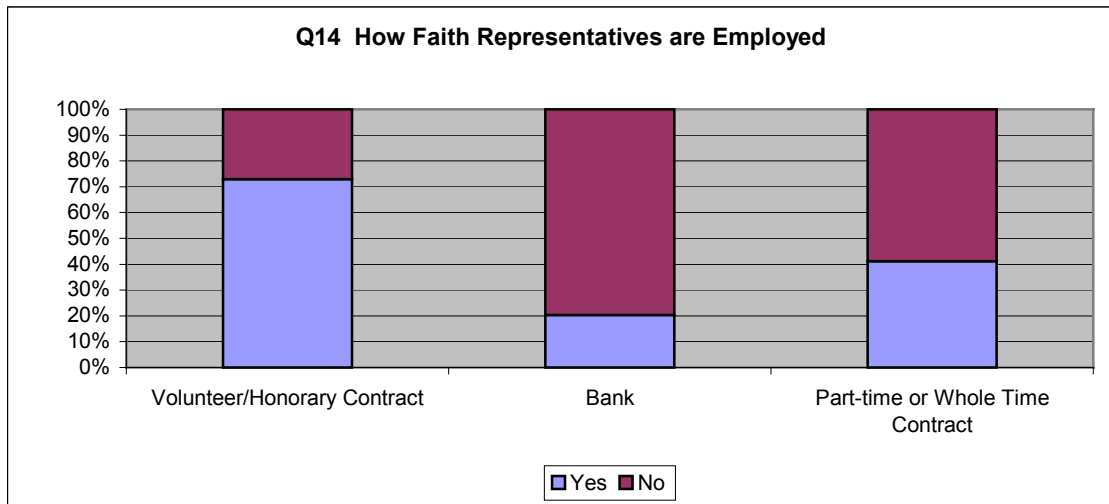


(Q11) 46% of responses indicated that a consultative assessment is made of the faith requirements of stakeholder communities.

(Q12) 80% of respondents stated that their Department provided suitable personnel to address the needs of people from world faiths. When provided, provision was made in the following ways: -

Q13.1 Brokerage Arrangement	31%
Q13.2 Ad-hoc/Informal arrangement	83%
Q13.3 Inclusion within the Department Team	45%

The most popular approach of employing faith representatives by those responding to the questionnaire was a voluntary/honorary contract (73%). 41% employed faith representatives on part-time or whole-time contracts. The least favoured method of employing faith representatives was via the bank (20%).



Q16 The department contributes to the leadership of healthcare services by:-

Q16.1 Involvement in leadership of multidisciplinary teams	42%
Q16.2 Involvement in leadership of projects or working groups	67%
Q16.3 Initiating/leading work in the Trust	71%
Q16.4 Other	34%